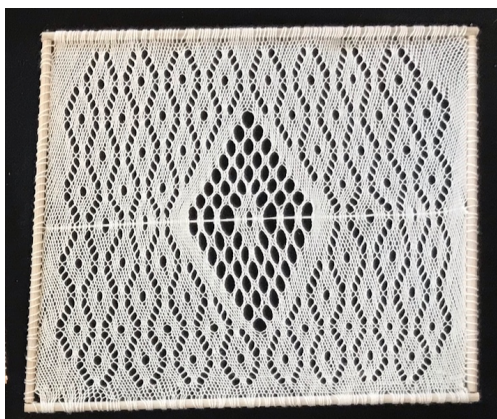
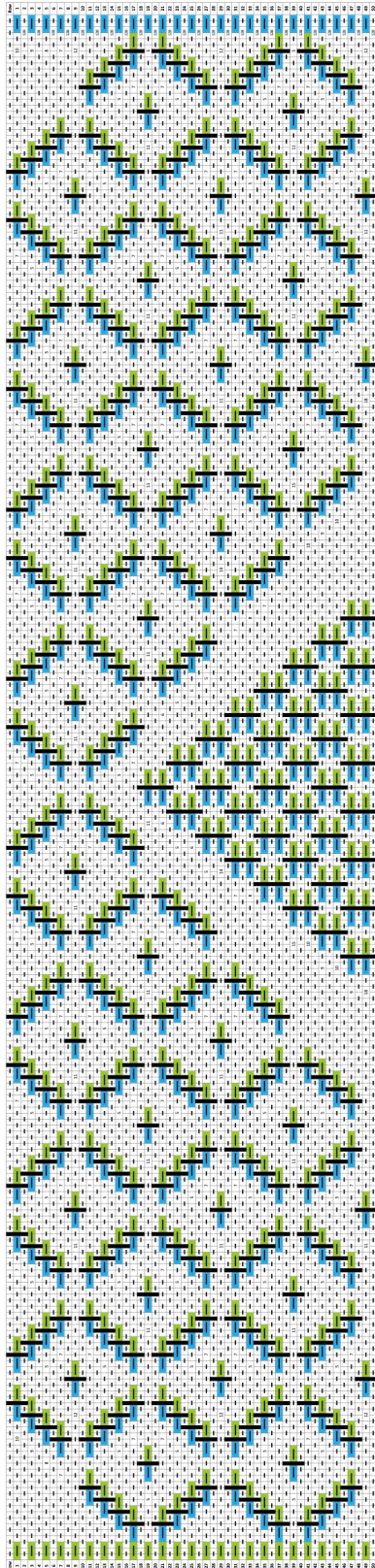


Window Square for February 2022

For a warp of 128 loops (256 threads)
 Carol set up a 14 inch long warp, using an 8/2 cotton
 for a square that measures 12 in x 10 ½ in.






- L-10P-R, (L-1P-R, L-7P-R)7, L-1P-R, L-10P-R ←Row 1
 L-9P-R, (L-3P-R, L-5P-R)7, L-3P-R, L-9P-R ←Row 3
 L-8P-R, (L-5P-R, L-3P-R)7, L-5P-R, L-8P-R ←Row 5
 L-7P-R, (L-7P-R, L-1P-R)7, L-7P-R, L-7P-R ←Row 7
 L-12P-R, (L-11P-R)7, L-12P-R ←Row 9
 L-3P-R, (L-1P-R, L-7P-R)8, L-1P-R, L-3P-R ←Row 11
 L-2P-R, L-3P-R, (L-5P-R, L-3P-R)8, L-2P-R ←Row 13
 L-1P-R, (L-5P-R, L-3P-R)8, L-5P-R, L-1P-R ←Row 15
 L-R, (L-7P-R, L-1P-R)8, L-7P-R, L-R ←Row 17
 L-5P-R, (L-11P-R)8, L-5P-R ←Row 19
 L-R, (L-7P-R, L-1P-R)3, L-7P-R, (L-6P-R)2, L-7P-R, (L-1P-R, L-7P-R)3, L-R ←Row 21
 L-1P-R, (L-5P-R, L-3P-R)3, (L-5P-R)2, L-1P-R, (L-5P-R)2, (L-3P-R, L-5P-R)3, L-1P-R ←Row 23
 L-6P-R, L-1P-R, L-6P-R, L-3P-R, (L-5P-R, L-3P-R)3, L-2P-R ←Row 25
 L-2P-R, (L-3P-R, L-5P-R)3, L-3P-R, ↵
 (L-1P-R)2, L-5P-R, (L-1P-R, L-7P-R)3, L-1P-R, L-3P-R ←Row 27
 L-3P-R, L-1P-R, (L-7P-R, L-1P-R)3, L-5P-R, ↵
 L-12P-R, (L-11P-R)2, L-14P-R, (L-1P-R)2, L-14P-R, (L-11P-R)2, L-12P-R ←Row 29
 L-3P-R, (L-1P-R, L-7P-R)3, L-7P-R, (L-1P-R)3, L-7P-R, (L-7P-R, L-1P-R)3, L-3P-R ←Row 31
 L-2P-R, (L-3P-R, L-5P-R)3, L-8P-R, (L-1P-R)3, L-8P-R, (L-5P-R, L-3P-R)3, L-2P-R ←Row 33
 L-1P-R, (L-5P-R, L-3P-R)3, L-7P-R, (L-1P-R)4, L-7P-R, (L-3P-R, L-5P-R)3, L-1P-R ←Row 35
 L-R, (L-7P-R, L-1P-R)3, L-8P-R, (L-1P-R)4, L-8P-R, (L-1P-R, L-7P-R)3, L-R ←Row 37
 L-5P-R, (L-11P-R)2, L-15P-R, (L-1P-R)5, L-15P-R, (L-11P-R)2, L-5P-R ←Row 39
 (L-1P-R)5, L-10P-R, L-7P-R, (L-1P-R, L-7P-R)2, L-R ←Row 41
 L-R, (L-7P-R, L-1P-R)2, L-7P-R, L-10P-R, ↵
 L-9P-R, (L-1P-R)6, L-9P-R, L-5P-R, (L-3P-R, L-5P-R)2, L-1P-R ←Row 43
 L-1P-R, (L-5P-R, L-3P-R)2, L-5P-R, ↵
 L-10P-R, (L-1P-R)6, L-10P-R, L-3P-R, (L-5P-R, L-3P-R)2, L-2P-R ←Row 45
 L-2P-R, (L-3P-R, L-5P-R)2, L-3P-R, ↵
 L-9P-R, (L-1P-R)7, L-9P-R, (L-1P-R, L-7P-R)2, L-1P-R, L-3P-R ←Row 47
 L-3P-R, L-1P-R, (L-7P-R, L-1P-R)2, ↵
 L-12P-R, L-11P-R, L-18P-R, (L-1P-R)7, L-18P-R, L-11P-R, L-12P-R ←Row 49



Stitch Abbreviations

- R Right-edge stitch: Pick up 2, put 1 down
- L Left-edge stitch: Pick up 1, put 2 down
- P Plain stitch: Pick up 1, put 1 down
- ↙ Pattern continues over more than one row

Chart legend

-  Plain Interlinking Stitch (P)
-  Left Edge Stitch (L):
Pick up one, put two down
-  Right Edge Stitch (R):
Pick up two, put one down

Find a version of the chart with greater resolution on the February web page