

# Exploring Fingerweaving Patterns

## Part 2: Two Direction Structures

### Section A: Chevrons

By Carol James



# Exploring Fingerweaving Patterns

## Part 2

The second category covers motifs working in two directions: center-to-edge or edge-to-center weaving. Think of this as working two diagonal stripe pieces back-to-back.

### Chevron Pattern

We begin with the simple chevron. It's best to begin with a warp of 4 colors, A, b, C, and D.

Set up a warp with 6A, 6B, 6C, and 6D.

You will work each row in two parts, part A and part B.

For part A, find the very center of the work,

so you have 12 threads in each hand.

From your right hand, identify the leftmost thread.

It will be your weft.

Weave it all the way to the left.

Then turn the work over for Part B.

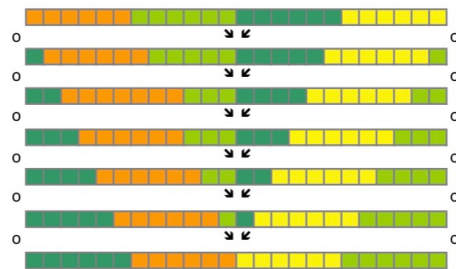
For part B, divide threads again into 2 groups.

but this time you need to have 11 on your left and 13 on your right.

From your right hand, again, identify the leftmost thread.

It will be your weft.

Weave it all the way to the left.



Use four colors to begin your exploration of the chevron pattern

#### Grid legend

Each square represents one thread.

↘ Select this thread as weft

o Thread returns to warp position here

x Switch wefts

△ Reverse chevron central join

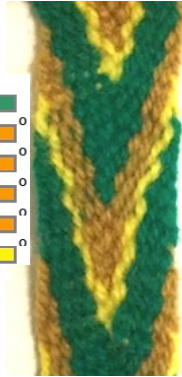
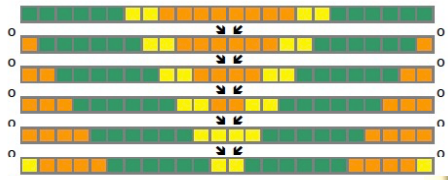


Here are some color variations of the same pattern.

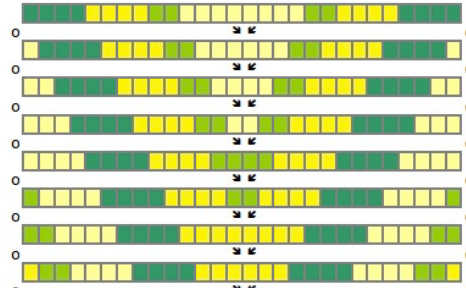
The one at the right features two colors in the "D" zone: alternating black-and-white.

To see the chevron clearly, colors must be arranged symmetrically around the center

Three colors arranged symmetrically  
A, B, C, C, B, A,



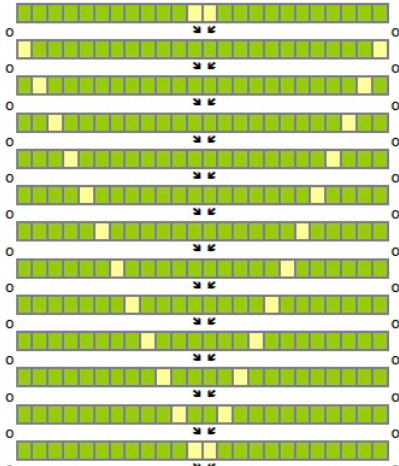
Four colors arranged  
A, B, C, D, D, C, B, A



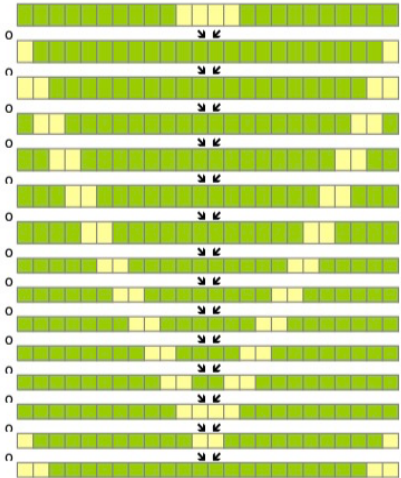
Here are some other color variations.

Information from the exercise from the diagonal stripe applies here.  
A wide variety of variations are possible.

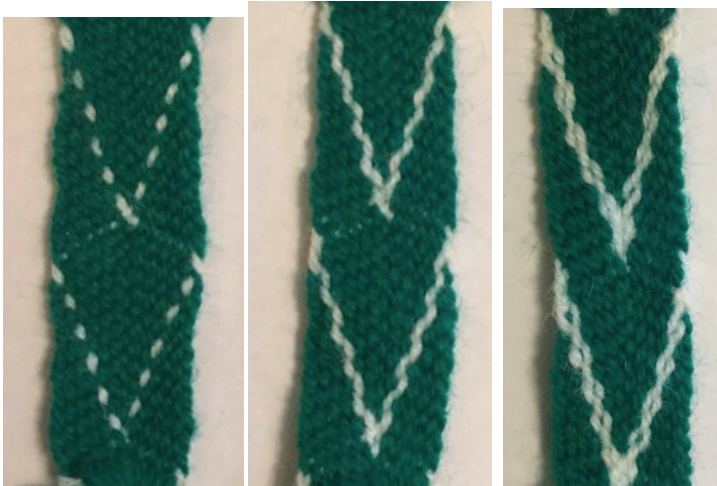
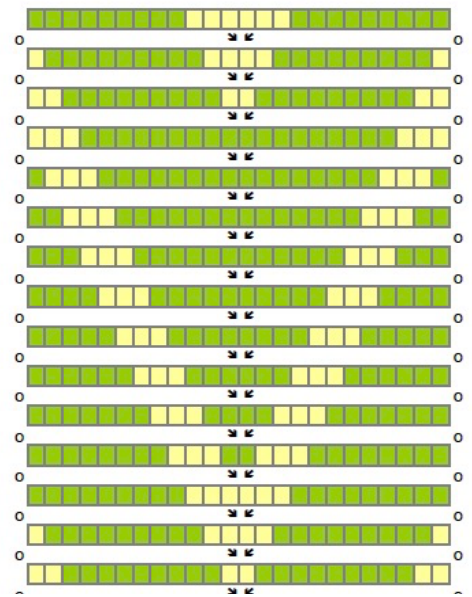
A single thread  
will give a dotted line,



Two threads give a solid line,



Three threads give a thick-and-thin line



# Reverse Chevron Pattern

Work from edge to center to reverse the pattern:

Set up a warp of 24 threads, with colors arranged symmetrically.  
Each row has two parts, A and B.

Part A: Begin at the right edge. Weave the rightmost thread across 11 threads, and then that thread returns to warp position.

Part B: Begin at the other edge. Weave the edge thread across 11 threads, and then cross with the weft thread from Part A.  
Weft threads return to warp position at the center of the work.

