

# Exploring Fingerweaving Patterns

## Part 1: Single Direction Structures Section A: Diagonals



by Carol James

# Exploring Fingerweaving Patterns

The book *Fingerweaving Untangled* appeared in 2008. Since that publication date, people have asked me to expand the information, offering instruction on ways to modify the patterns. I will attempt to do that here.

This document assumes you already know how to fingerweave, and are comfortable with my pattern writing method. If you want to learn fingerweaving from scratch, or seek help to understand the way I write patterns, and how the patterns relate to the finger movements, let me suggest you watch my video *Fingerweaving Instructions*, available on DVD from my website, or on-line streaming at taprootvideo.com

This is the first of several documents dedicated to the exploration of fingerweaving patterns. I've divided the patterns into several groups according to the structure:

- single direction patterns (working from selvedge to selvedge)
- two direction patterns (working from center-to-edge, or edge-to-center)
- arrows with lightnings, and flames

The simplest finger weaving motif, and the first motif covered in *Fingerweaving Untangled* is the diagonal stripe. In this structure, threads move as weft from rightmost position to a new position further to the left. This category includes the first 4 patterns in Fingerweaving Untangled, the stipple, diagonal stripe, vertical stripe, and sawtooth.

The second category will cover motifs involving center-to-edge or edge-to-center weaving. These include the chevron, reverse chevron, and arrowhead,

The third category will deal with the Assomption, and flame patterns. It offers a basic pattern and then ideas for increasing the width, how to widen the arrow, how to add color zones.

Other groupings may include double wefts, multiple centers, and other irregular patterns.

It is my hope that these documents will help you in your explorations, allowing you to design your own variations.

Wishing you many hours of happy finger weaving.

## Grid legend

Each square represents one thread.

☛ select this thread as weft

○ thread returns to warp position here

x Switch wefts

## Single Direction Structures

In this structure, threads move as weft from rightmost position to a new position further to the left. The width of the piece will vary with the thickness of the thread as well as with the number of threads. The simplest structure, the structure that is easiest for students to work, is a structure formed of alternating colors.

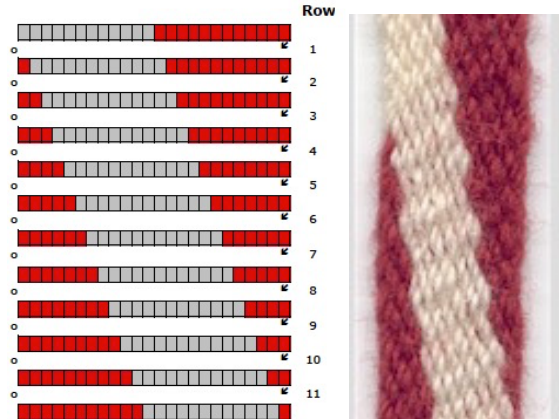
## Diagonal Stripe

Set up a warp of 24 threads  
in 2 colors, A and B  
Set up 12 A, 12 B

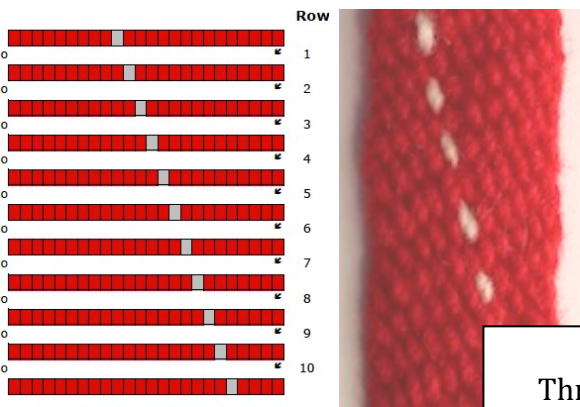
Select the rightmost thread as weft.  
Weave all the way to the left.  
Every row

Vary thickness of the lines  
by varying the number of threads  
in the color section.

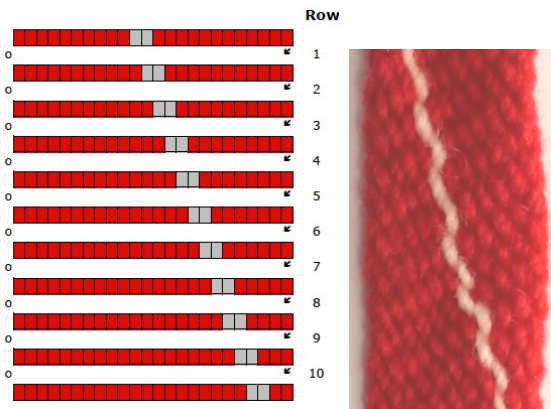
### Diagonal Stripe



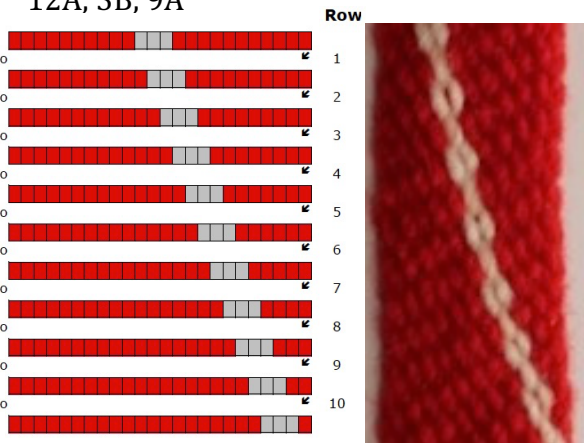
A single thread of a contrasting color  
will give a dotted line:  
10A, 1B, 13A



Two threads of a contrasting color will give  
a solid line: 10A, 2B, 12A



Three threads of a contrasting color  
will give a thick-and-thin line  
12A, 3B, 9A



Mix it up, use varying numbers  
of threads within the same warp  
2 A, 1B, 4A, 2B, 4A, 3B, 4A

**Row**

0 1  
0 2  
0 3  
0 4  
0 5  
0 6  
0 7  
0 8  
0 9  
0 10  
0 11

The stipple (alternating colors) can be used to  
make an interesting pattern.

8A, 4 AB, 8B

**Row**

0 1  
0 2  
0 3  
0 4  
0 5  
0 6  
0 7  
0 8  
0 9  
0 10  
0 11  
0 12

The "Ladder" pattern features stipple  
on both sides of the solid colors.

3AB, 6A, 3AB, 6B

**Row**

0 1  
0 2  
0 3  
0 4  
0 5  
0 6  
0 7  
0 8  
0 9  
0 10  
0 11  
0 12

Vary the pattern by adding another color.  
To set up a strip that is the same width,  
but has 3 colors A, B, and C  
Set up a warp of 24 threads, 8A, 8B, 8C

Add interest by varying the width of the  
color sections  
4A, 4B, 4C, 6D, 6E

Increase the width of this diagonal stripe  
by increasing the number of threads in  
each section.

Using more than 2 colors adds visual  
interest.



## Stippled Flame

Set up a warp of 24 threads  
in 4 colors:  
8A, 4B1B2, 8C.

**Row 1:** Displacement 15, 8, 3.

**Row 2:** Displacement 13, 8, 5.

**Row 3:** Displacement 11, 8, 7.

**Row 4:** Displacement 9, 8, 9.

**Row 5:** Displacement 7, 8, 11.

**Row 6:** Displacement 5, 8, 13.

**Row 7:** Displacement 3, 8, 15.

**Row 8:** Displacement 1, 8, 17

## Stippled Lightning

Set up a warp of 24 threads  
in 4 colors:  
8A, 4B1B2, 8C.

**Row 1:** Displacement 12, 8, 4.  
Adventure: 5

**Row 2:** Displacement 10, 8, 6.  
Adventure: 4

**Row 3:** Displacement 8, 8, 8.  
Adventure: 3

**Row 4:** Displacement 6, 8, 10.  
Adventure: 2

**Row 5:** Displacement 4, 8, 12.  
Adventure disappears.