



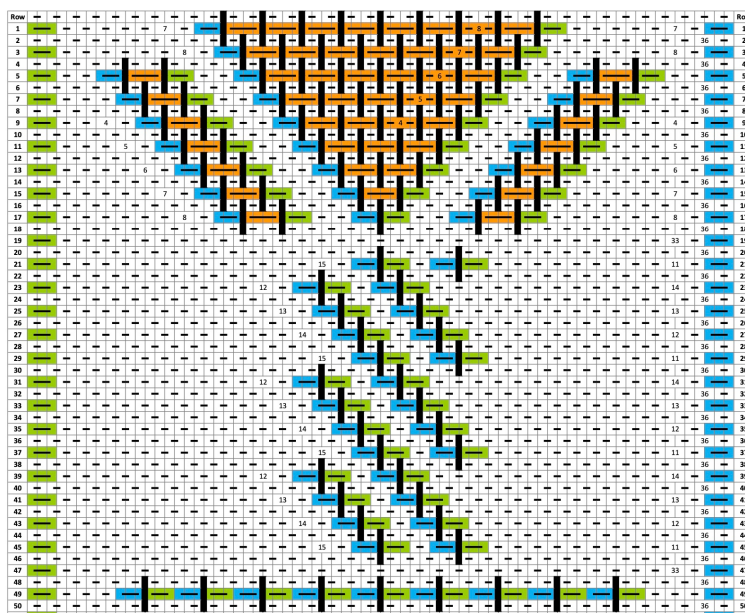
May Motif B Tree

Inspired by a piece in the British Museum

- L-7P-R, 8D, L-7P-R ← Row 1
- L-8P-R, 7D, L-8P-R ← Row 3
- L-2P-R, 1D, L-2P-R, 6D, L-2P-R, 1D, L-2P-R ← Row 5
- L-3P-R, 1D, L-2P-R, 5D, L-2P-R, 1D, L-3P-R ← Row 7
- L-4P-R, 1D, L-2P-R, 4D, L-2P-R, 1D, L-4P-R ← Row 9
- L-5P-R, 1D, L-2P-R, 3D, L-2P-R, 1D, L-5P-R ← Row 11
- L-6P-R, 1D, L-2P-R, 2D, L-2P-R, 1D, L-6P-R ← Row 13
- L-7P-R, 1D, L-2P-R, 1D, L-2P-R, 1D, L-7P-R ← Row 15
- L-8P-R, 1D, (L-2P-R)2, 1D, L-8P-R ← Row 17
- L-33P-R ← Row 19
- L-15P-R, L-1P-R, L-11P-R ← Row 21
- L-12P-R, L-1P-R, L-14P-R ← Row 23
- L-13P-R, L-1P-R, L-13P-R ← Row 25
- L-14P-R, L-1P-R, L-12P-R ← Row 27
- L-15P-R, L-1P-R, L-11P-R ← Row 29
- L-12P-R, L-1P-R, L-14P-R ← Row 31
- L-13P-R, L-1P-R, L-13P-R ← Row 33
- L-14P-R, L-1P-R, L-12P-R ← Row 35
- L-15P-R, L-1P-R, L-11P-R ← Row 37
- L-12P-R, L-1P-R, L-14P-R ← Row 39
- L-13P-R, L-1P-R, L-13P-R ← Row 41
- L-14P-R, L-1P-R, L-12P-R ← Row 43
- L-15P-R, L-1P-R, L-11P-R ← Row 45
- L-33P-R ← Row 47
- L-3P-R, (L-R)8, L-3P-R ← Row 49
- L-33P-R ← Row 51

Stitch Abbreviations

- R Right-edge stitch: Pick up 2, put 1 down
- L Left-edge stitch: Pick up 1, put 2 down
- P Plain stitch: Pick up 1, put 1 down



Grid Legend

- Plain Interlinking Stitch
- Left-Edge Stitch
Pick up one, put two down
- Right-Edge Stitch
Pick up two, put one down
- Double stitch: two up, two down
Pick up two, put two down
- Indicates the number of stitches
- Indicates a hole

May Motif A

www.SprangLady.com

© 2022 CC BY-SA Carol James