



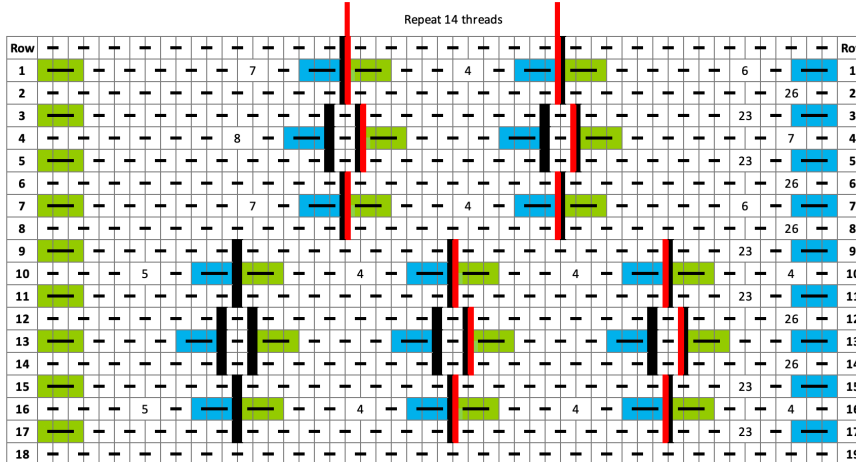
## July Motif A

For a warp of 52 threads (26 loops)  
Repeat 14 threads (7 loops)

L-7P-R, \*L-4P-R\*, L-6P-R ← Row 1  
26P ← Row 2  
L-23P-R ← Row 3  
8P-R, 1P, \*L-3P-R, 1P\*, L-7P ← Row 4  
L-23P-R ← Row 5  
26P ← Row 6  
L-7P-R, \*L-4P-R\*, L-6P-R ← Row 7  
26P ← Row 8  
L-23P-R ← Row 9  
5P-R, L-4P-R, \*L-4P-R\*, L-4P ← Row 10  
L-23P-R ← Row 11  
26P ← Row 12  
L-3P-R, 1P, L-3P-R, 1P, \*L-3P-R, 1P\*, L-2P-R ← Row 13  
26P ← Row 14  
L-23P-R ← Row 15  
5P-R, L-4P-R, \*L-4P-R\*, L-4P ← Row 16  
L-23P-R ← Row 17  
26P ← Row 18  
Repeat from row 1 ← Row 19

### Stitch Abbreviations

R Right-edge stitch: Pick up 2, put 1 down  
L Left-edge stitch: Pick up 1, put 2 down  
P Plain stitch: Pick up 1, put 1 down  
D Double stitch: pick up 2, put 2 down  
\* Indicates repeat section



### Chart legend

Plain Interlocking Stitch  
 Left-Edge Stitch  
 Pick up one, put two down  
 Right-Edge Stitch  
 Pick up two, put one down  
 Double stitch: two up, two down  
 Pick up two, put two down  
 Indicates the number of stitches  
 Indicates a hole  
 Demarcates a repeat section