

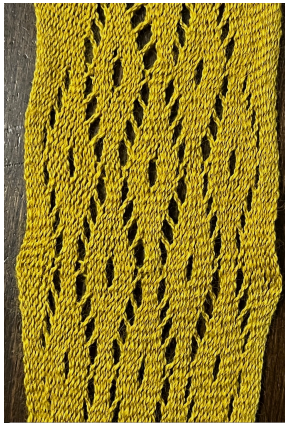


Victoria and Albert Museum
Collection number T.199.1976

February Motif B

Inspired by a piece in the Victoria and Albert Museum

T.199.1976



For a warp of 96 threads (48 loops)

Repeat 28 threads (14 loops)

L-12P-R, L-1P-R, * L-7P-R, L-1P-R, * L-12P-R ←Row 1

And all even-numbered rows 48 P ←Row 2

L-11P-R, L-3P-R, *L-5P-R, L-3P-R, * L-11P-R ←Row 3

L-10P-R, L-5P-R, *L-3P-R, L-5P-R, * L-10P-R ←Row 5

L-9P-R, L-7P-R, *L-1P-R, L-7P-R, * L-9P-R ←Row 7

L-14P-R, *L-11P-R, * L-14P-R ←Row 9

L-5P-R, L-1P-R, L-7P-R, L-1P-R, *L-7P-R, L-1P-R, * L-5P-R ←Row 11

L-4P-R, L-3P-R, L-5P-R, L-3P-R, *L-5P-R, L-3P-R, * L-4P-R ←Row 13

L-3P-R, L-5P-R, L-3P-R, L-5P-R, L-3P-R, L-5P-R, * L-3P-R ←Row 15

L-2P-R, L-7P-R, L-1P-R, L-7P-R, L-1P-R, L-7P-R, * L-2P-R ←Row 17

L-7P-R, L-11P-R, *L-11P-R, * L-7P-R ←Row 19

L-2P-R, L-7P-R, L-1P-R, L-7P-R, L-1P-R, L-7P-R, * L-2P-R ←Row 21

L-3P-R, L-5P-R, L-3P-R, L-5P-R, L-3P-R, L-5P-R, * L-3P-R ←Row 23

L-4P-R, L-3P-R, L-5P-R, L-3P-R, *L-5P-R, L-3P-R, * L-4P-R ←Row 25

L-5P-R, L-1P-R, L-7P-R, L-1P-R, *L-7P-R, L-1P-R, * L-5P-R ←Row 27

Repeat from row 9 ←Row 29

Stitch Abbreviations

R	Right-edge stitch: Pick up 2, put 1 down
L	Left-edge stitch: Pick up 1, put 2 down
P	Plain stitch: Pick up 1, put 1 down
*	Indicates repeat section

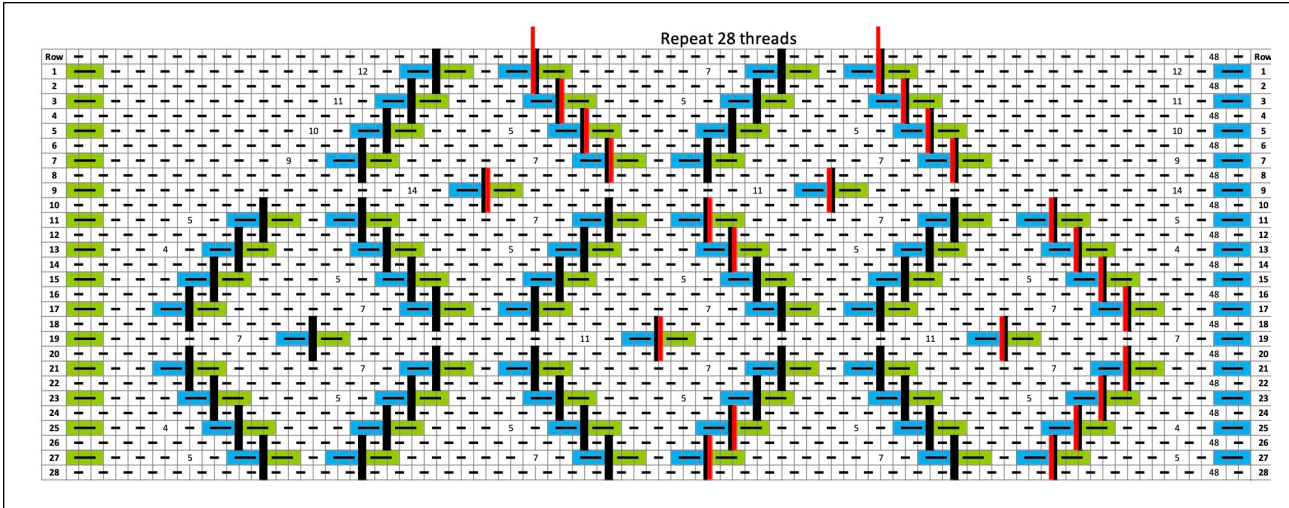

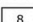






Chart legend

- | | | | |
|---|---|---|----------------------------|
|  | Plain Interlinking Stitch (P) |  | Number of Stitches |
|  | Left Edge Stitch (L):
Pick up one, put two down |  | Indicates a hole |
|  | Right Edge Stitch (R):
Pick up two, put one down |  | Indicates a repeat section |