

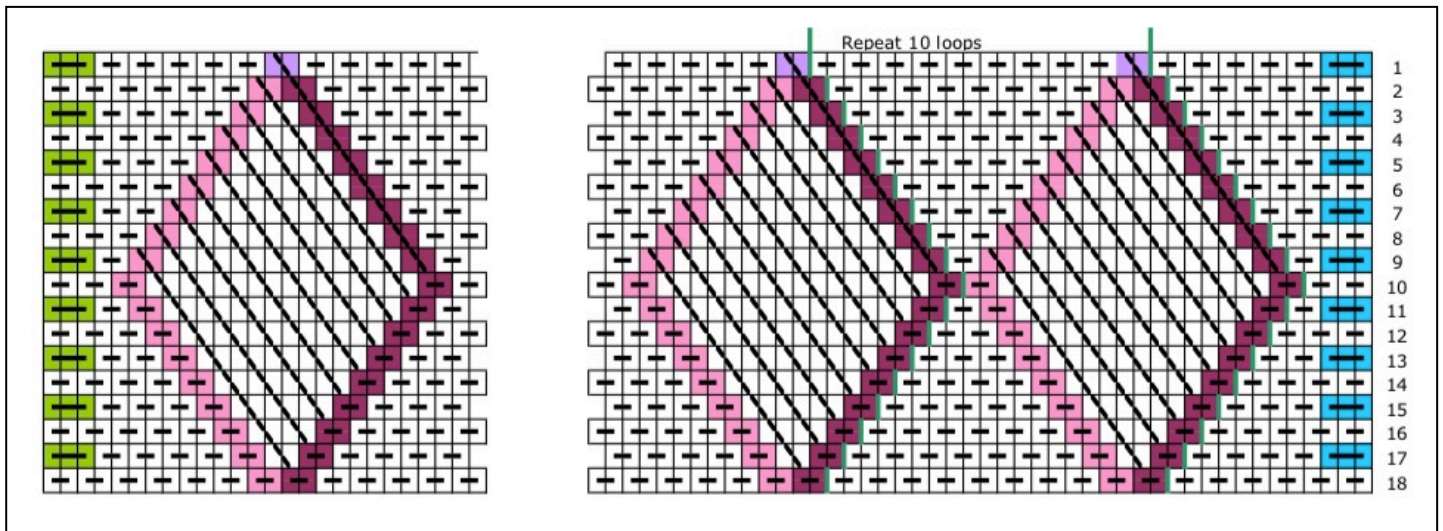
Diamond Pattern Hat

260 yards worsted weight yarn
Set 154 loops (308 threads)
on a 30 inch sprang frame.



Work nine rows of plain interlinking stitches.
Then begin the diamond pattern:

EL, 5P, 1P(a), {9P, 1P(a)}14, 5P, ER ←Row 1
6P, 1P(b),1P(f), {8P, 1P(b),1P(f)}14, 6P ←Row 2
EL, 4P, 1P(b),1P, 1P(f), {7P, 1P(b), 1P, 1P(f)}14, 4P, ER ←Row 3
5P, 1P(b),2P, 1P(f), {6P, 1P(b), 2P, 1P(f)}14, 5P ←Row 4
EL, 3P, 1P(b), 3P, 1P(f), {5P, 1P(b), 3P, 1P(f)}14, 3P, ER ←Row 5
4P, 1P(b), 4P, 1P(f), {4P, 1P(b), 4P, 1P(f)}14, 4P ←Row 6
EL, 2P, 1P(b), 5P, 1P(f), {3P,1P(b), 5P, 1P(f)}14, 2P, ER ←Row 7
3P, 1P(b), 6P, 1P(f), {2P,1P(b), 6P, 1P(f)}14, 3P ←Row 8
EL, 1P,1P(b), 7P, 1P(f), {1P, 1P(b), 7P, 1P(f)}14, 1P, ER ←Row 9
2P, 1P(b), 8P, 1P(f), {1P(b), 8P, 1P(f)}14, 2P ←Row 10
EL, 1P, 1P(b), 7P, 1P(f), {1P, 1P(b), 7P, 1P(f)}14, 1P, ER ←Row 11
3P, 1P(b),6P,1P(b) {2P, 1P(b), 6P, 1P(f)}14, 3P ←Row 12
EL, 2P, 1P(b), 5P,1P(f), {3P, 1P(b), 5P,1P(f)}14, 2P, ER ←Row 13
4P, 1P(b),4P,1P(b) {4P, 1P(b), 4P, 1P(f)}14, 4P ←Row 14
EL, 3P, 1P(b), 3P,1P(f), {5P, 1P(b), 3P,1P(f)}14, 3P, ER ←Row 15
5P, 1P(b),2P,1P(b) {6P, 1P(b), 2P, 1P(f)}14, 5P ←Row 16
EL, 4P, 1P(b), 1P,1P(f), {7P, 1P(b), 1P,1P(f)}14, 4P, ER ←Row 17
6P, 1P(b), 1P(f), {9P, 1P(b), 1P(f)}14, 6P ←Row 18



Stitch and Grid Legend



P Plain interlinking stitch: pick up one, put one down



EL Left-edge stitch: pick up one, put two down



ER Right-edge stitch: pick up two, put one down



P(a) Plain interlinking stitch in S on a field of Z, a very awkward stitch



P(f) Plain interlinking stitch in S using two front threads



P(b) Plain interlinking stitch in S using two back threads



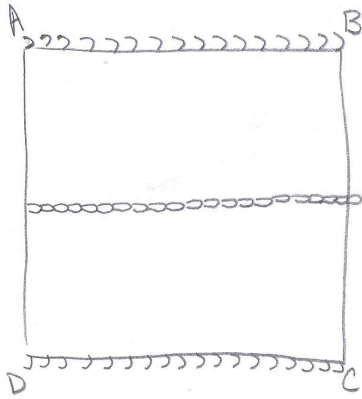
P(f) Plain interlinking stitch in Z using two front threads



P(b) Plain interlinking stitch in Z using two back threads

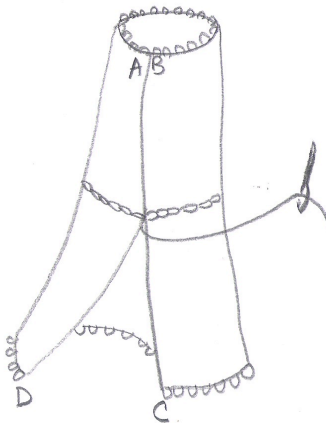
Work this pattern 1 ½ times,
that is, work rows 1-18,
and then work rows 3-10 of the pattern.
Then work all stitches in S, until you get to the center.

Assembly Step 1



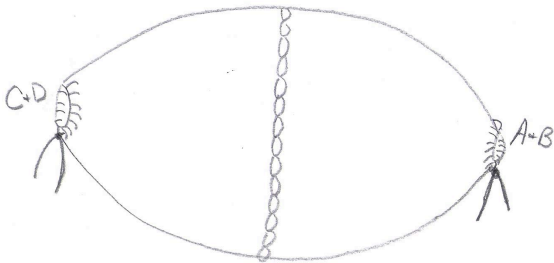
At the center, chain across (Assembly Step 1),
and then sew into a tube (Assembly Step 2).
Gather at both ends (Assembly Step 3),

Assembly Step 2



Side view showing the slightly wider diamond, and the 'jog' along the side seam.

Assembly Step 3



Assembly Step 4
Push one side into the other to
form the double-walled hat.

Assembly Step 4

