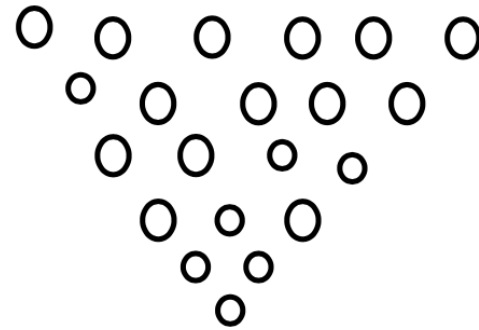


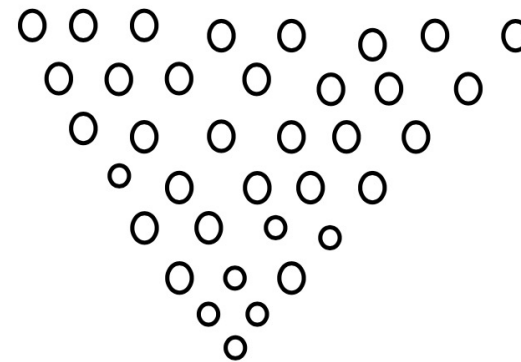
Lace Charting Exercise



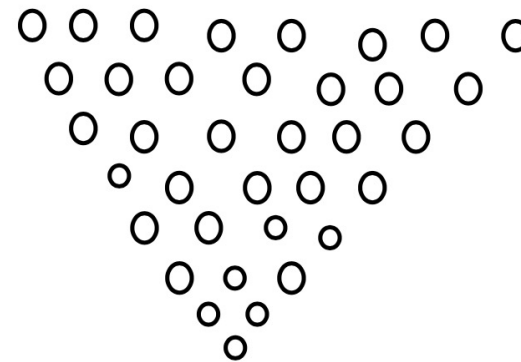
Begin by drawing the pattern of holes



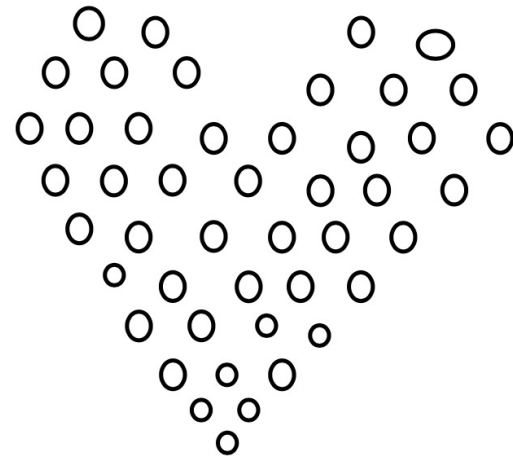
Begin by drawing the pattern of holes



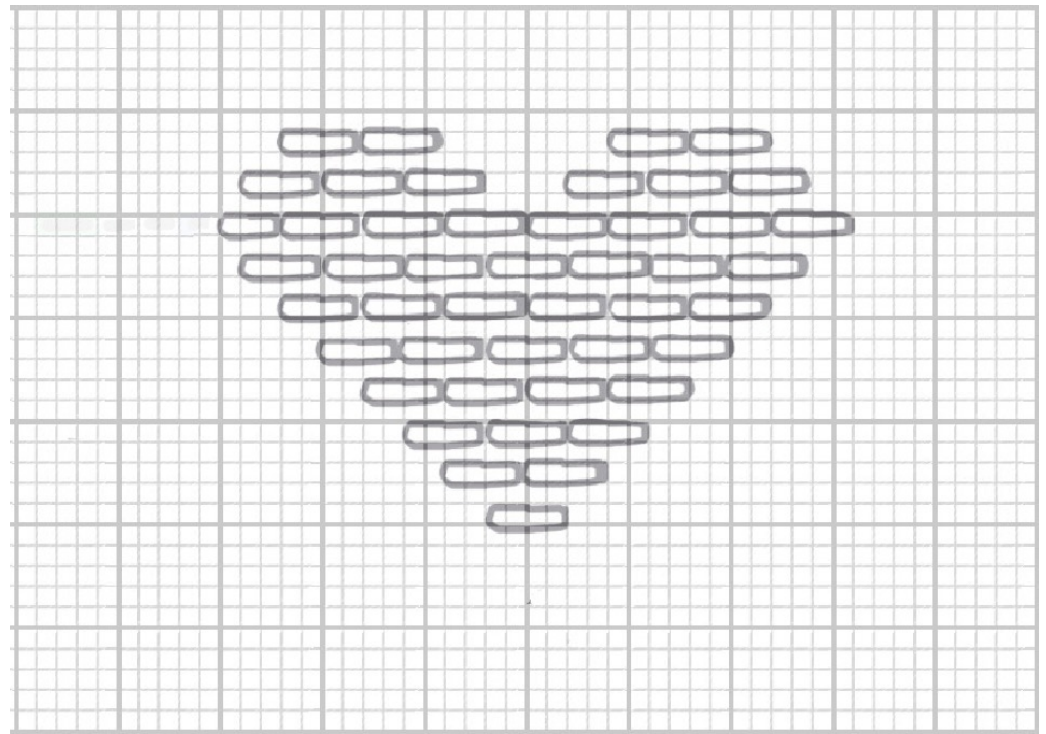
Begin by drawing the pattern of holes



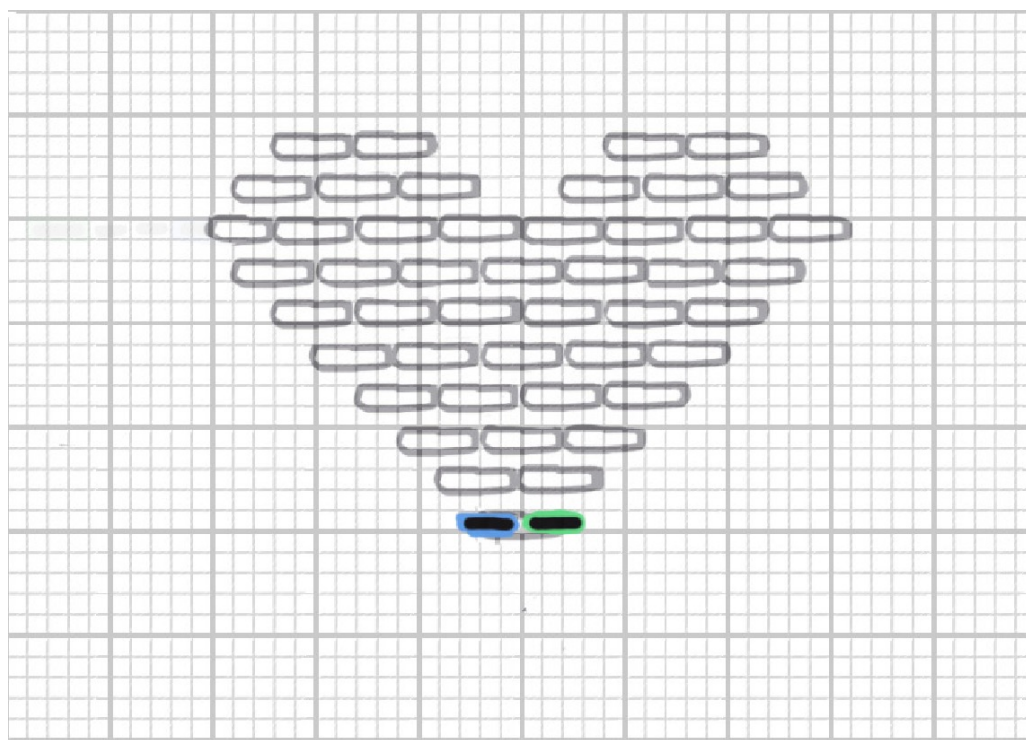
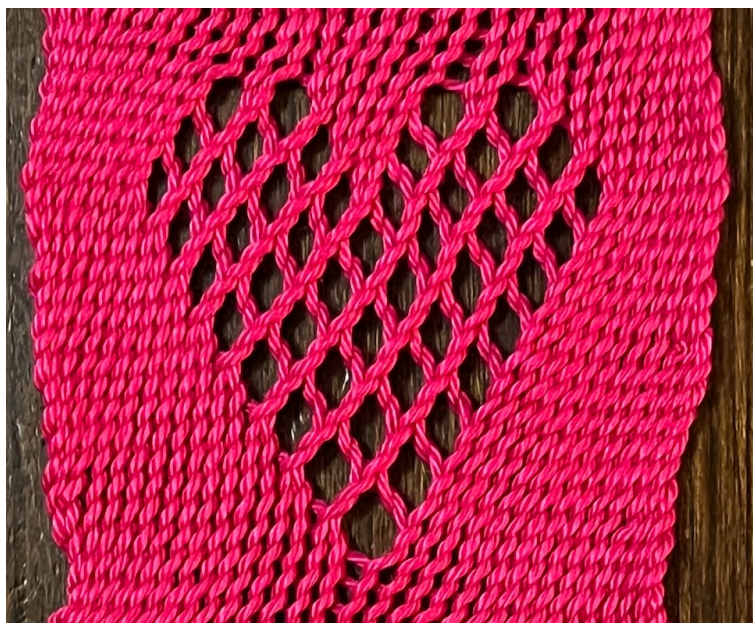
Begin by drawing the pattern of holes



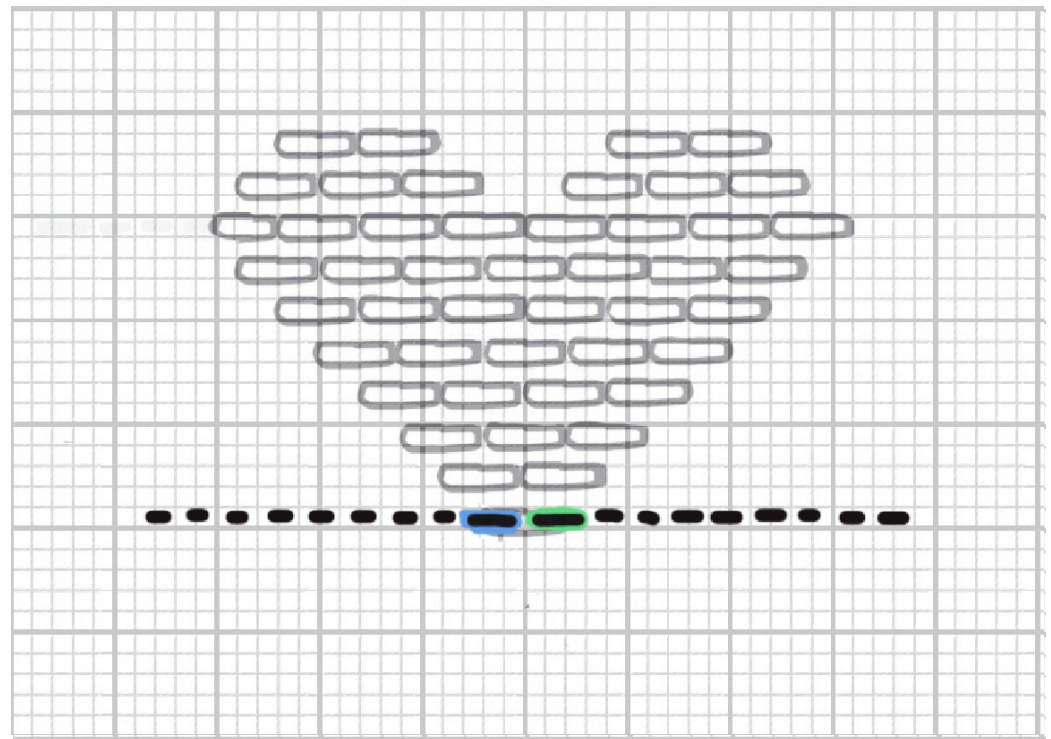
Transfer the pattern of holes to graph paper.
Each hole uses 4 squares.



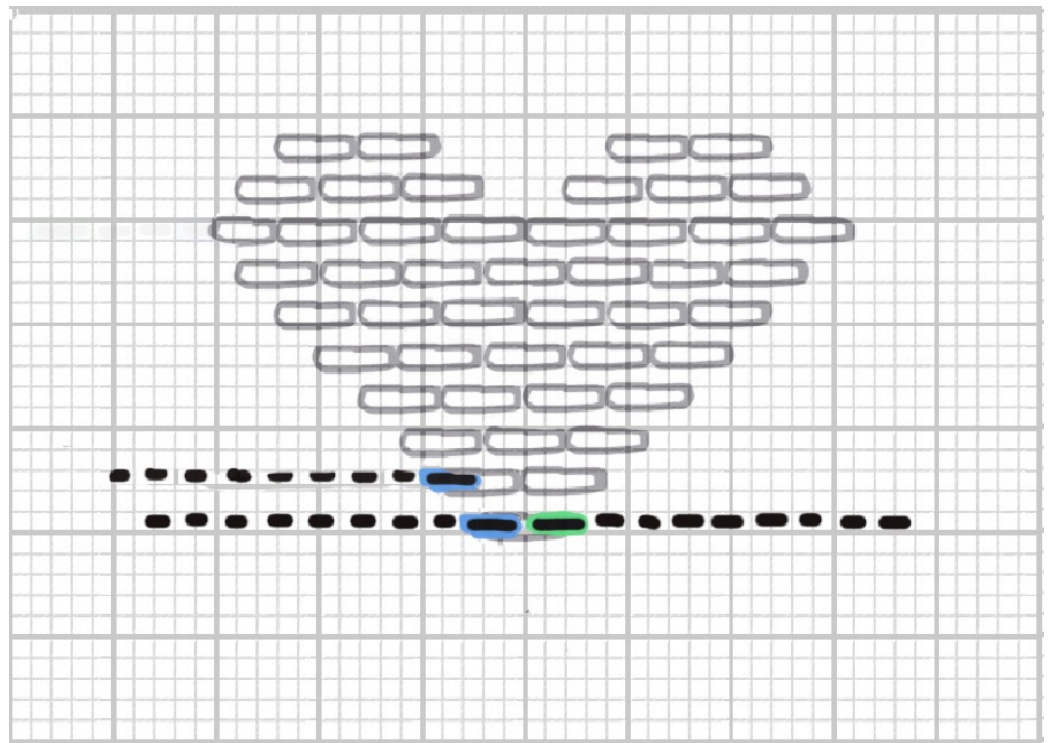
The hole at the bottom of the motif must be left-edge, right-edge stitches



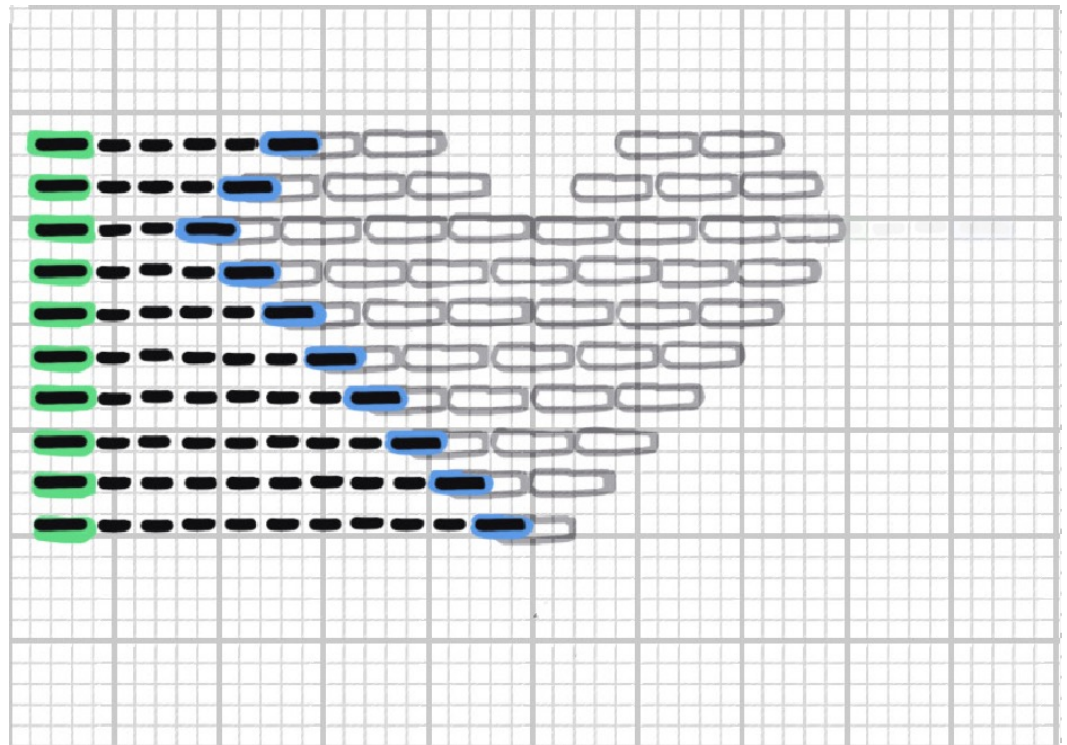
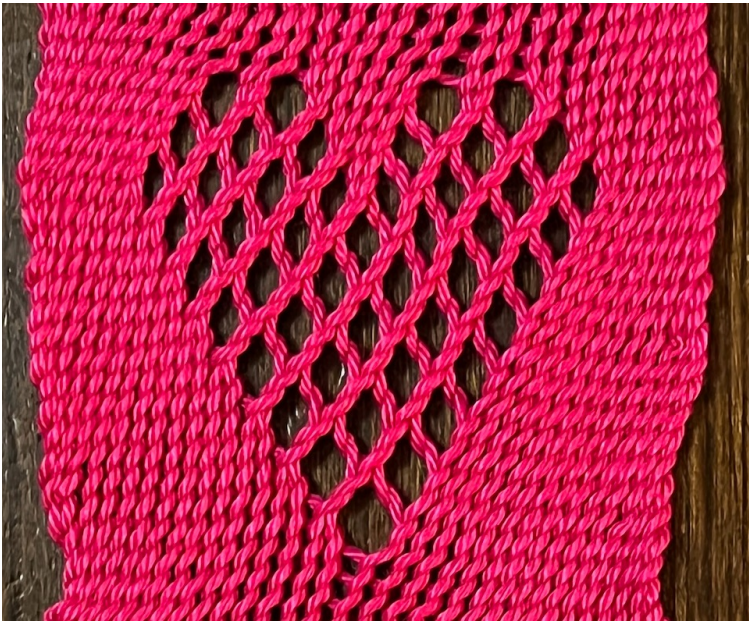
There will be plain stitches on either side of this hole.



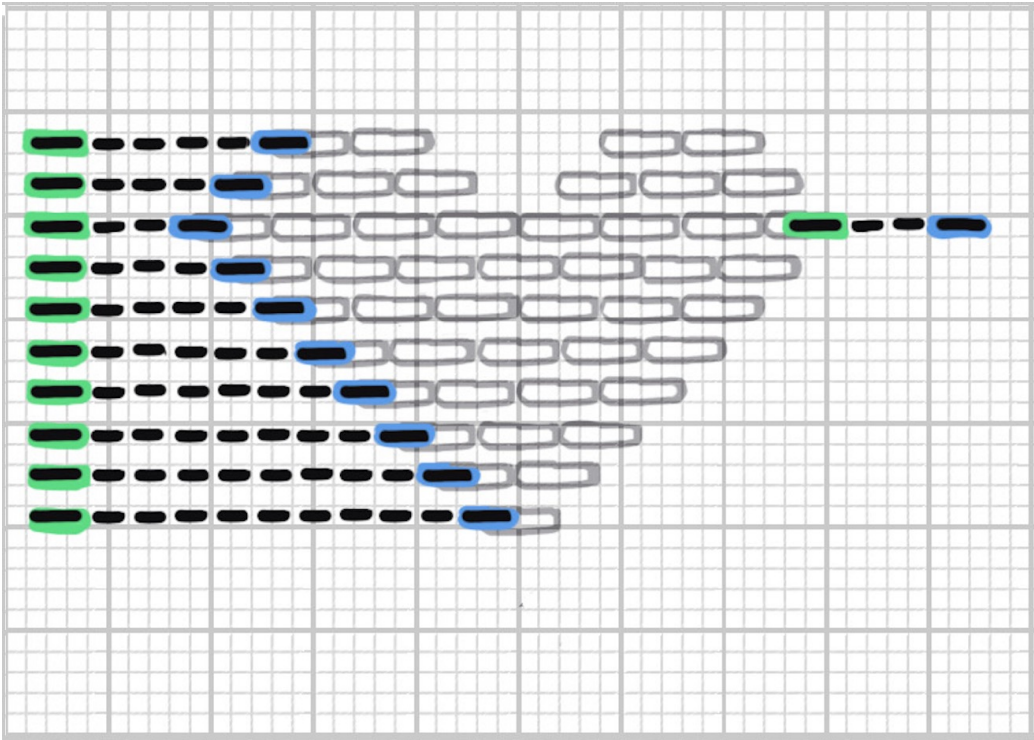
I write in the right-edge stitch
and plain stitches
working up the left side of the motif.



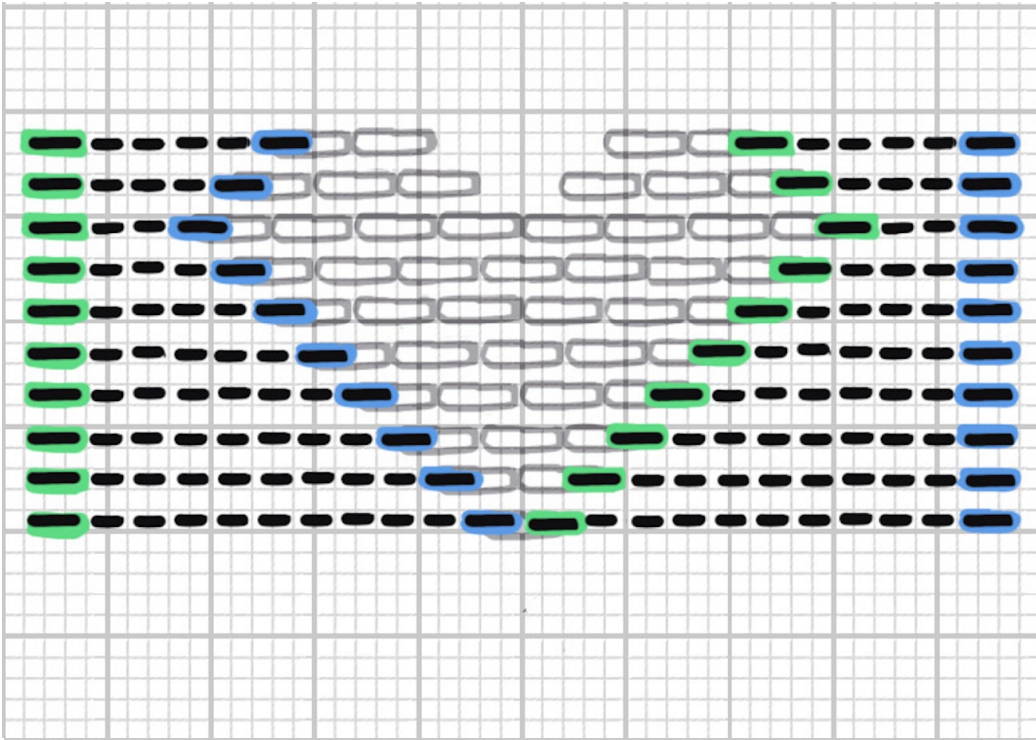
You might decide on the left edge of the cloth.



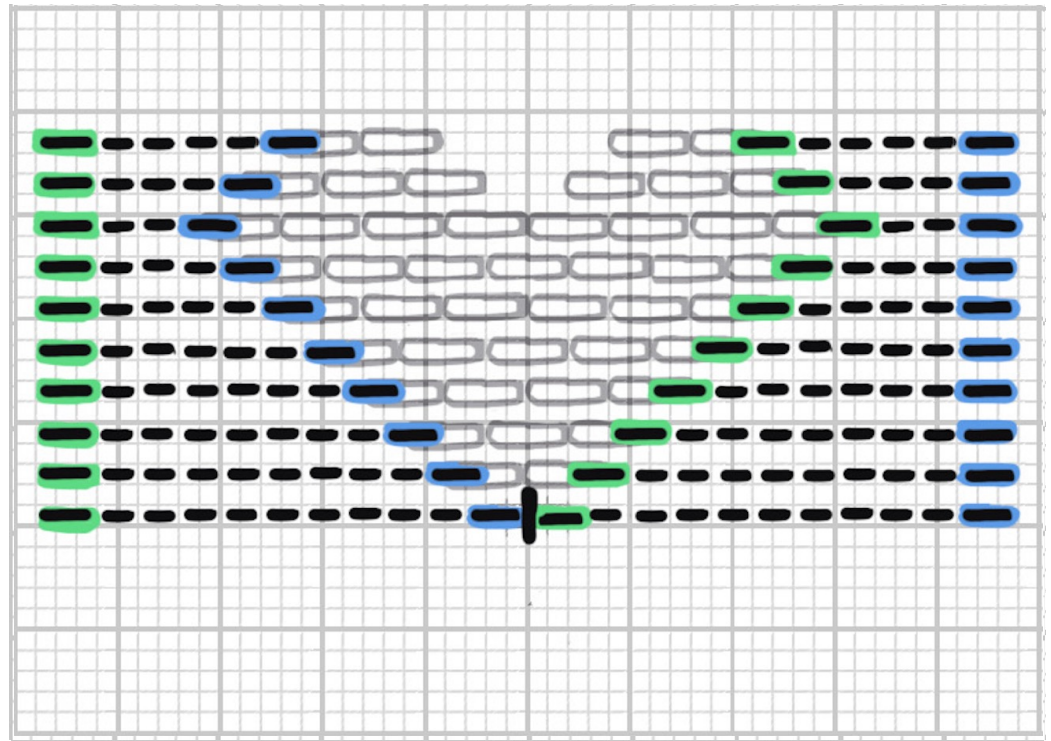
You now begin on writing in the stitches along the right side of the motif.



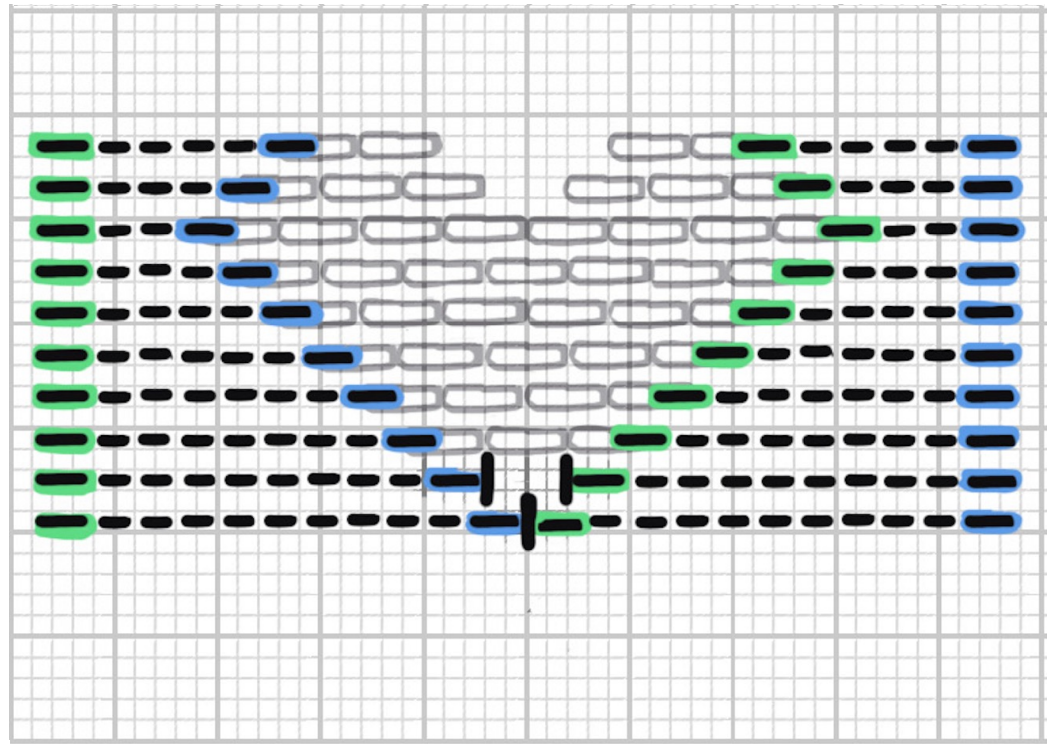
You now begin on writing in the stitches along the right side of the motif.



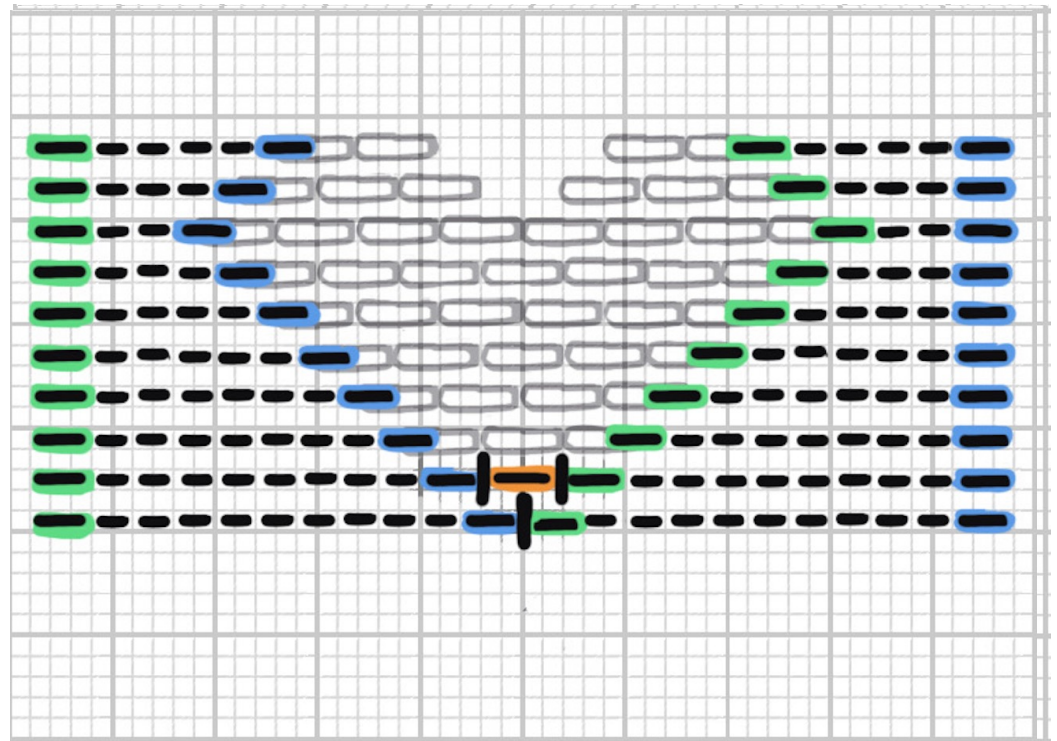
Now make a heavy dark line
in the center of each circle to indicate the holes.



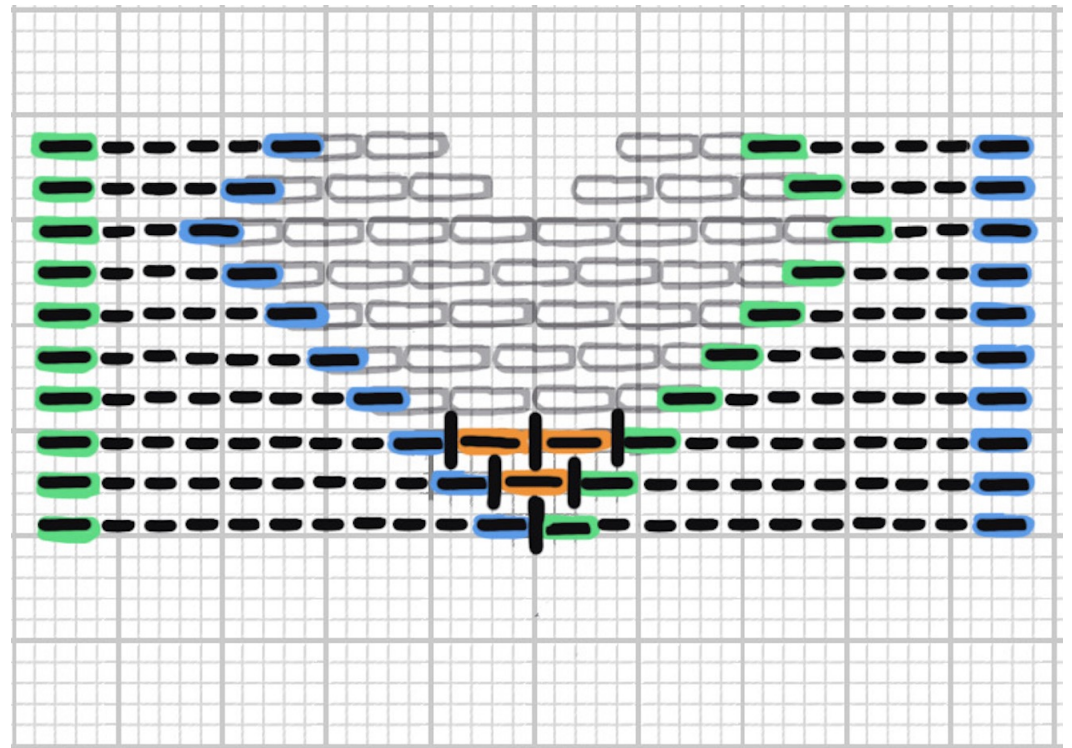
One dark line at the bottom of the heart.
Two dark lines just above that.



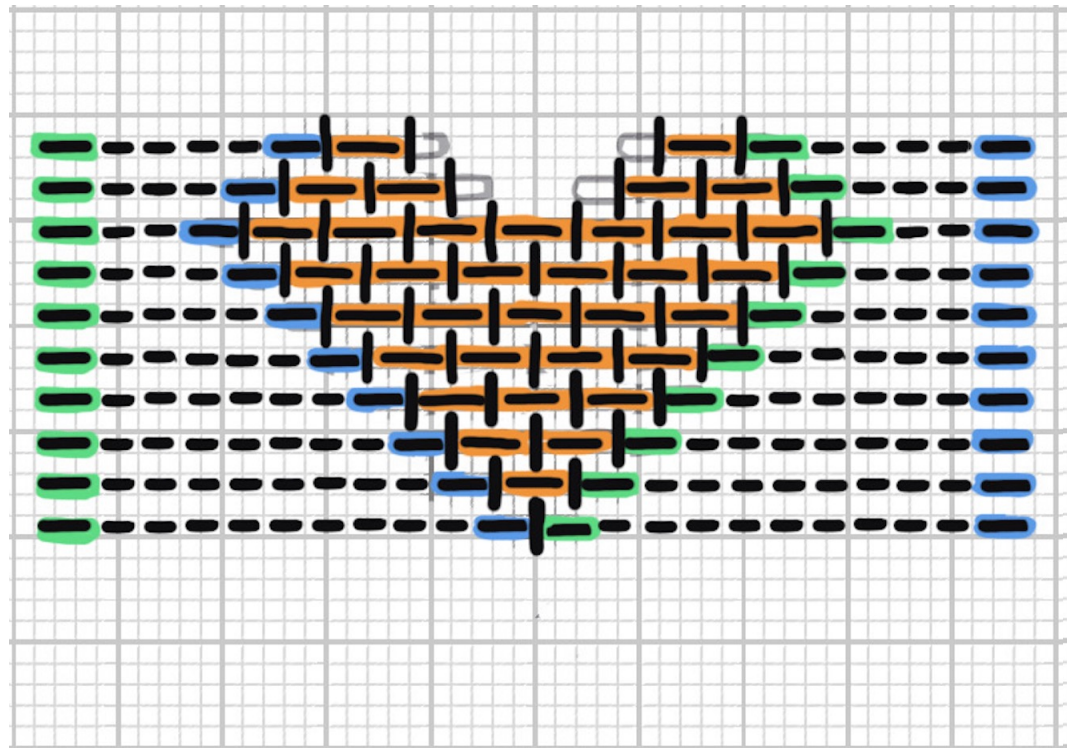
A stitch that uses 4 threads is a double stitch.
The double stitch results in two holes,
one on each side.



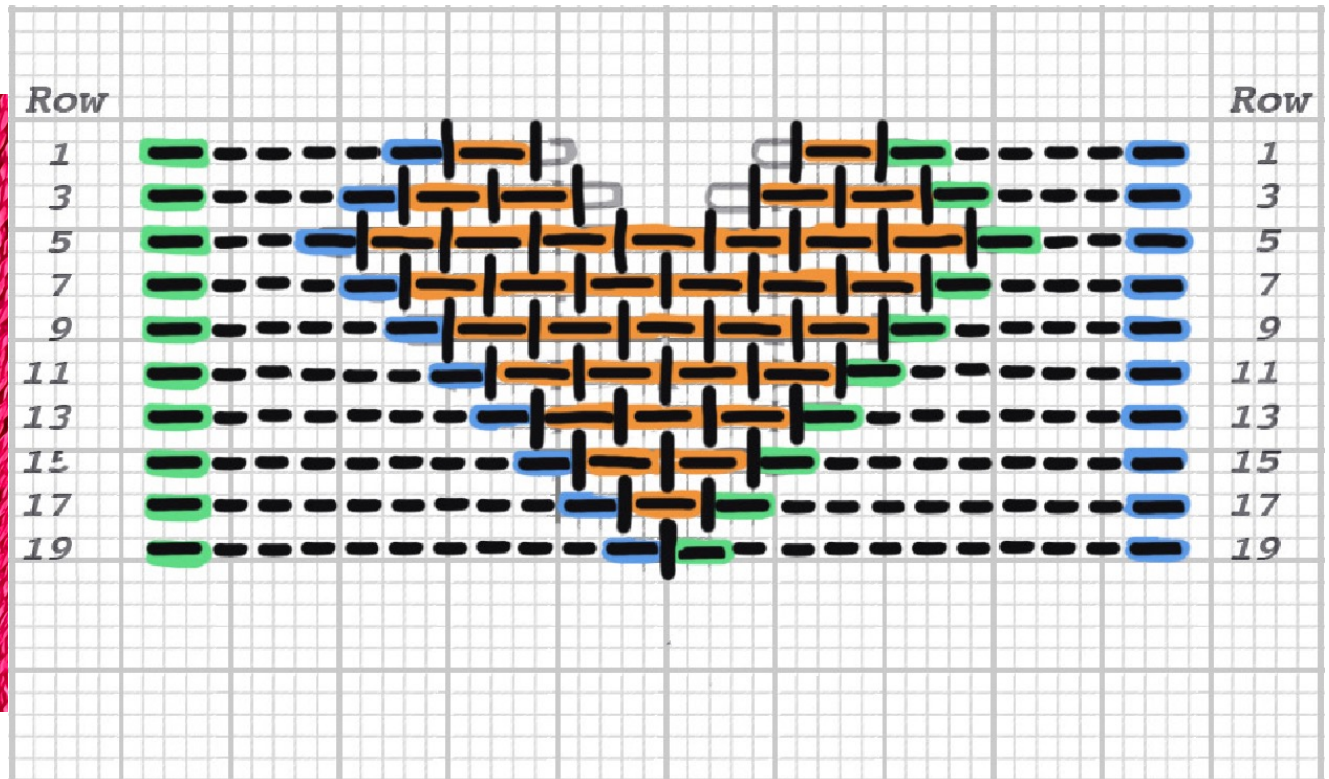
Make a dark vertical line in the center of each circle.
Each set of 4 threads is a double stitch.



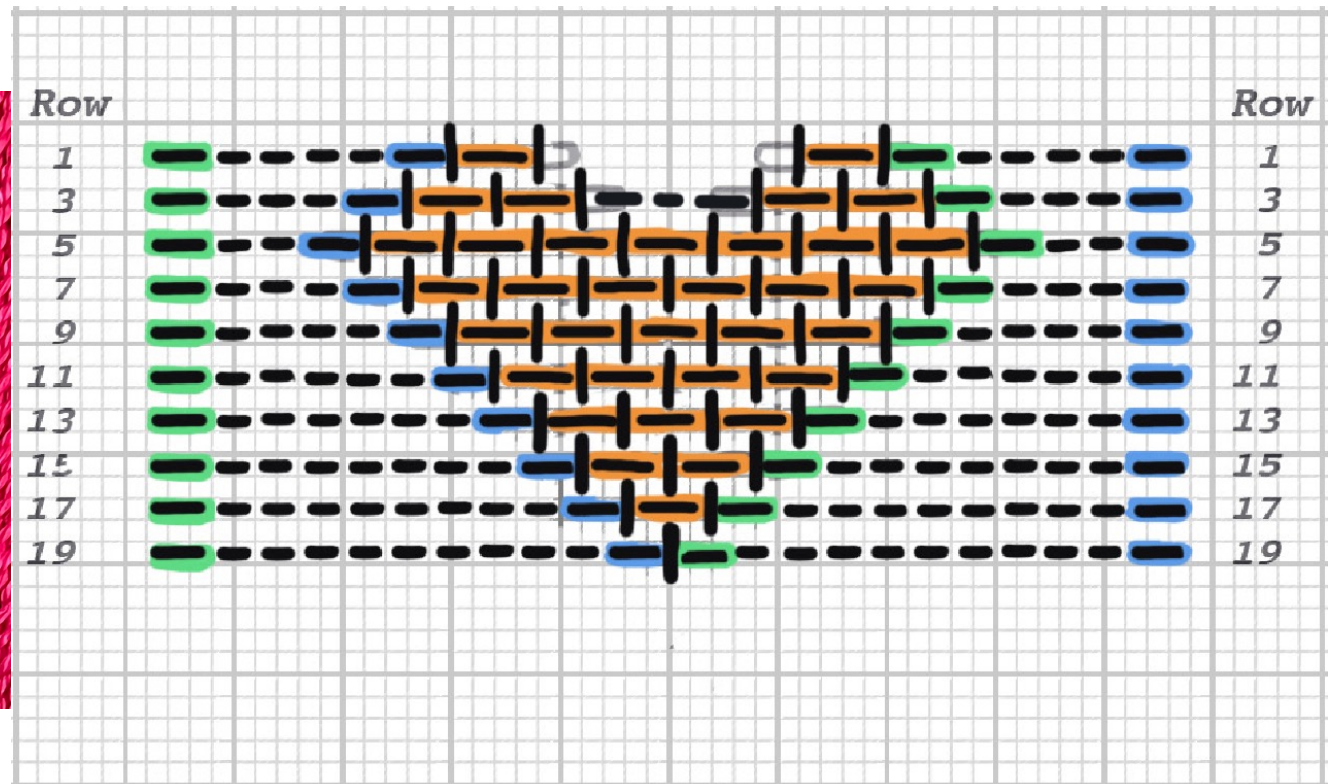
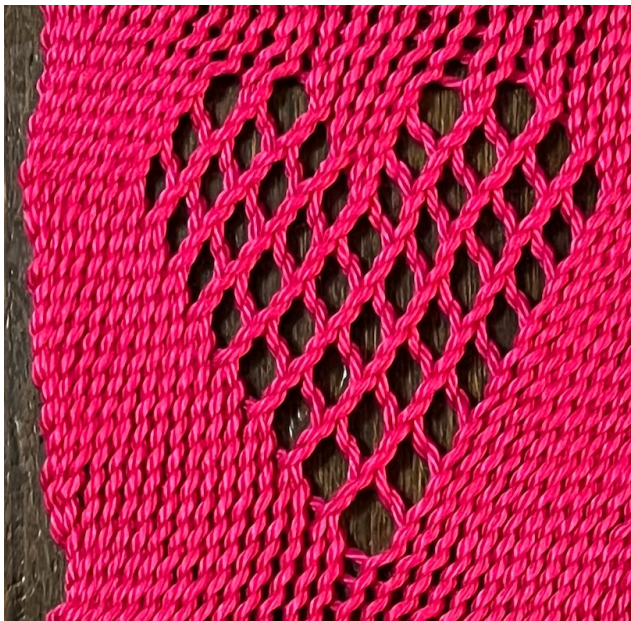
Fill in the heart motif,
marking the double stitches.



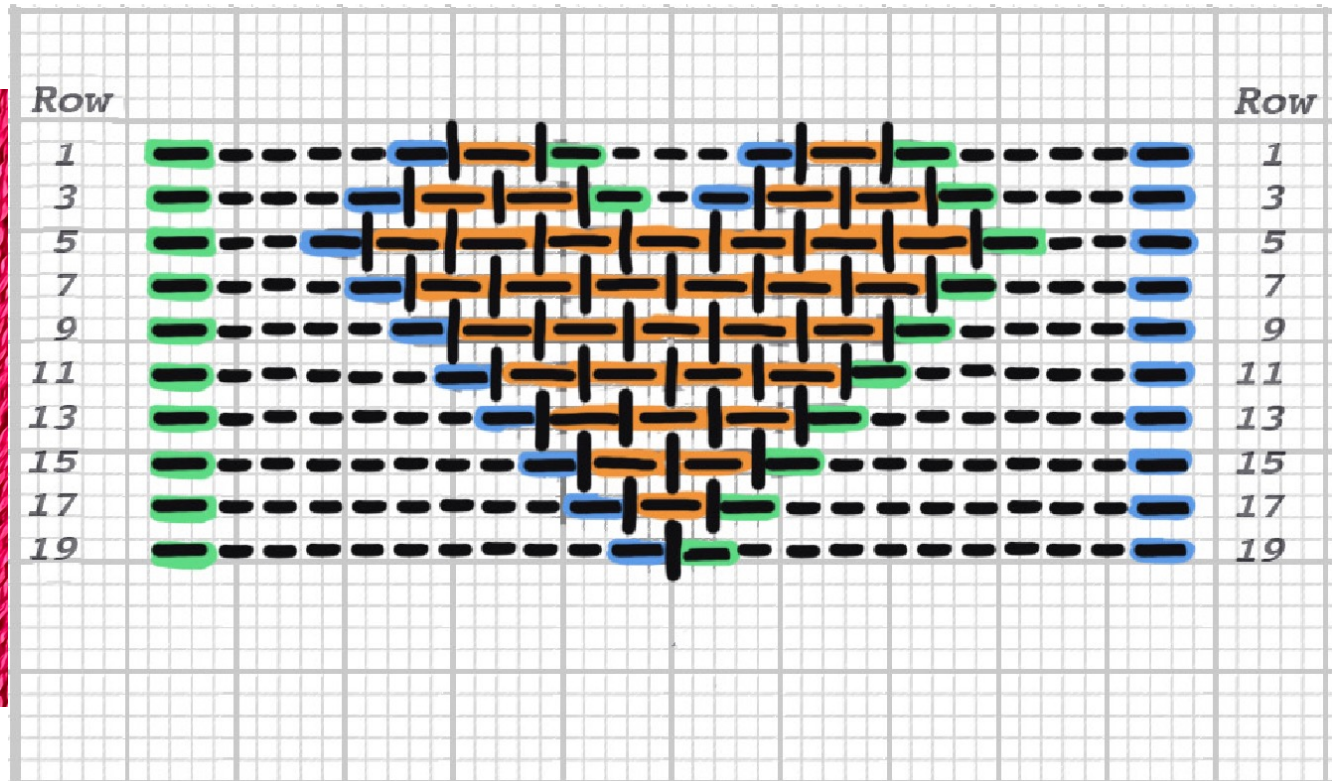
Let's put in the row numbers.



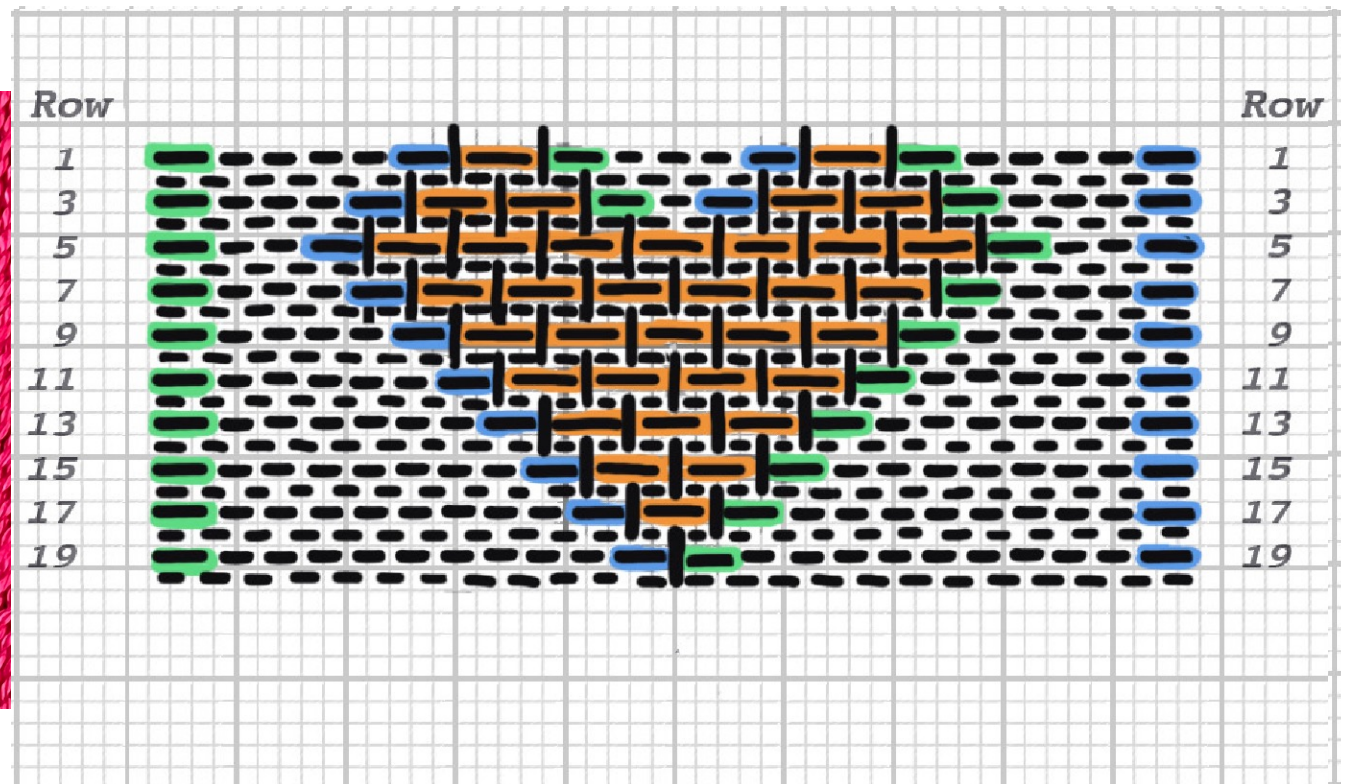
Now for the plain stitches in the notch
at the top of the heart.



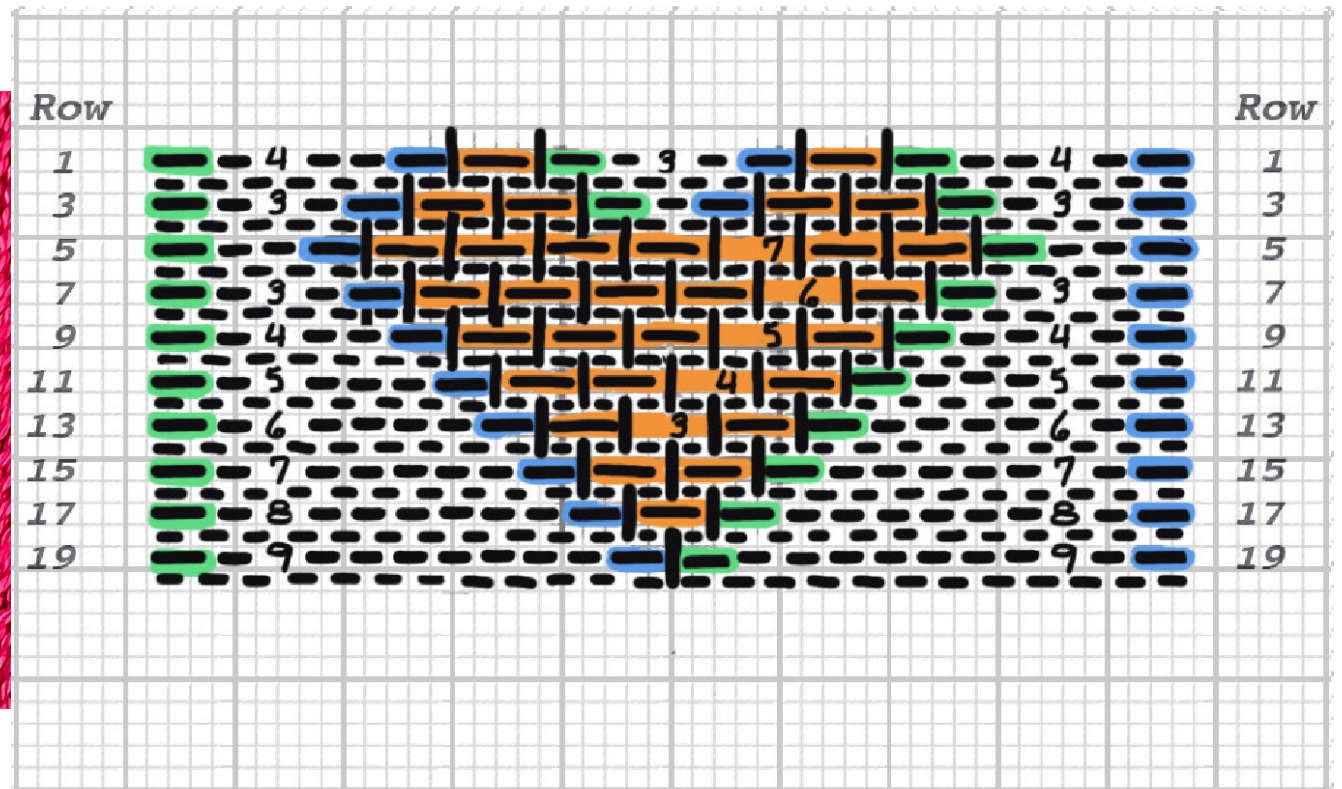
Now for the plain stitches in the notch
at the top of the heart.



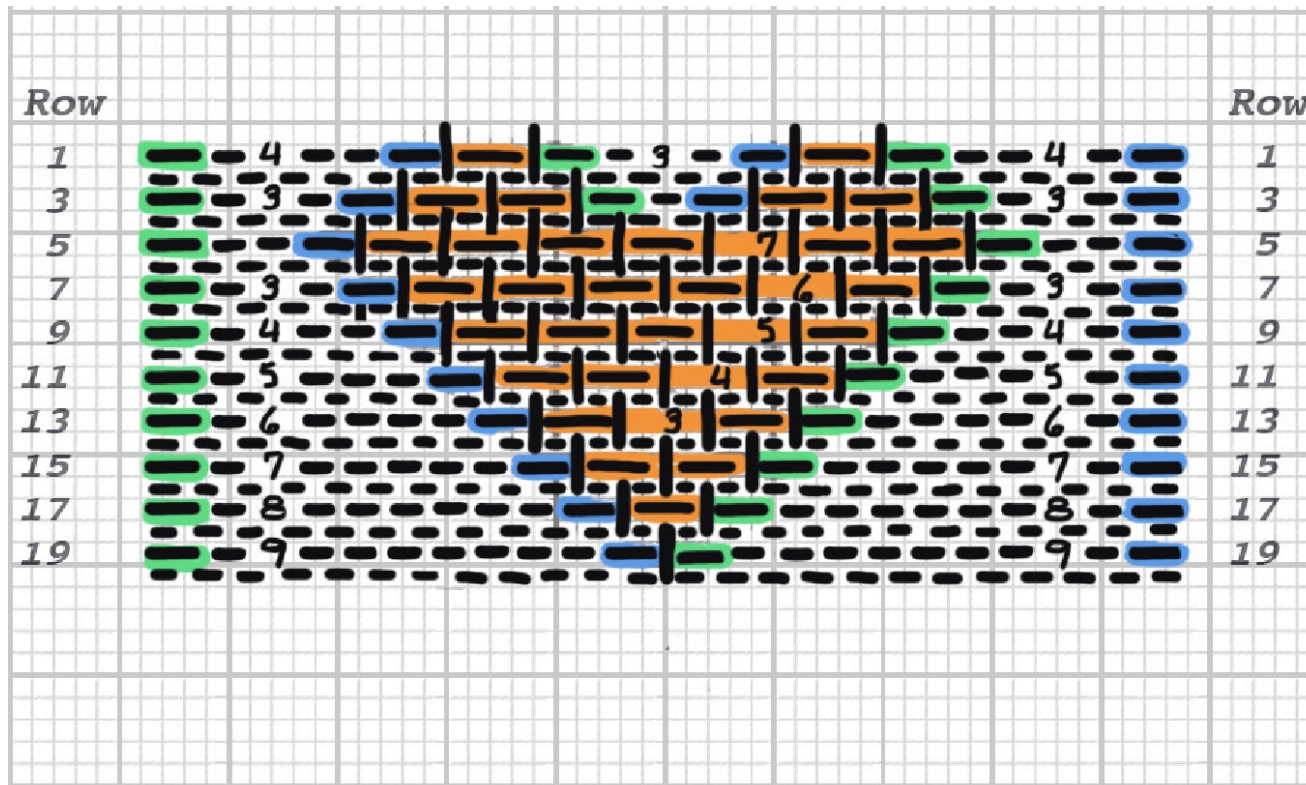
The overplait rows will have only plain stitches.
Note: no plain stitch crosses a heavy vertical line.



Count the number of stitches.



You can now derive the written pattern.



Row 1

- Right-edge stitch
- 4 plain stitches
- Left-edge stitch
- One double stitch
- Right-edge stitch
- 3 plain stitches
- Left-edge stitch
- One double stitch
- Right-edge stitch
- 4 plain stitches
- Left-edge stitch

