



August Window Square

Inspired by a piece of lace in the
 Art and History Museum
 Brussels, Belgium
 D.0965.15

- (L-22P-R)2 ←Row 1
 50P ←Row 2
 1L-47P-R ←Row 3
 23P-R, 1P, L-23P ←Row 4
 1L-47P-R ←Row 5
 50P ←Row 6
 L-15P-R, L-3P-R, 1D, L-3P-R, L-15P-R ←Row 7
 50P ←Row 8
 1L-47P-R ←Row 9
 17P-R, L-2P-R, L-R, L-2P-R, L-17P ←Row 10
 1L-47P-R ←Row 11
 50P ←Row 12
 L-16P-R, (L-1P-R)3, L-16P-R ←Row 13
 50P ←Row 14
 1L-47P-R ←Row 15
 13P-R, L-2P-R, L-R, L-2P-R, L-R, L-2P-R, L-13P ←Row 16
 1L-47P-R ←Row 17
 50P ←Row 18
 L-12P-R, L-2P-R, 1D, L-3P-R, 1D, L-2P-R, L-12P-R ←Row 19
 50P ←Row 20
 1L-47P-R ←Row 21
 14P-R, L-2P-R, 1P, L-4P-R, 1P, L-2P-R, L-14P ←Row 22
 1L-47P-R ←Row 23
 50P ←Row 24
 L-1P-R, L-4P-R, (L-2P-R)2, (L-1P-R)2, (L-2P-R)2, L-4P-R, L-1P-R ←Row 25
 50P ←Row 26
 L-21P-R, 1D, L-21P-R ←Row 27
 3P-R, L-3P-R, 1P, L-2P-R, L-14P-R, L-2P-R, 1P, L-3P-R, L-3P ←Row 28
 L-20P-R, L-1P-R, L-20P-R ←Row 29
 50P ←Row 30
 L-2P-R, L-2P-R, 1D, L-7P-R, L-3P-R, L-7P-R, 1D, L-2P-R, L-2P-R ←Row 31
 50P ←Row 32
 L-18P-R, (L-1P-R)2, L-18P-R ←Row 33
 4P-R, L-1P-R, L-R, L-22P-R, L-R, L-1P-R, L-4P ←Row 34
 L-17P-R, L-7P-R, L-17P-R ←Row 35
 22P-R, L-R, L-22P ←Row 36
 L-3P-R, L-R, L-1P-R, L-3P-R, L-9P-R, L-3P-R, L-1P-R, L-R, L-3P-R ←Row 37
 50P ←Row 38

L-15P-R, L-1P-R, (L-R)2, L-1P-R, L-15P-R ← Row 39
 5P-R, 1D, L-30P-R, 1D, L-5P ← Row 40
 L-14P-R, L-13P-R, L-14P-R ← Row 41
 19P-R, (L-R)3, L-19P ← Row 42
 L-4P-R, 1P, L-5P-R, L-15P-R, L-5P-R, 1P, L-4P-R ← Row 43
 50P ← Row 44
 L-12P-R, L-1P-R, (L-R)4, L-1P-R, L-12P-R ← Row 45
 6P-R, L-32P-R, L-6P ← Row 46
 L-11P-R, L-19P-R, L-11P-R ← Row 47
 16P-R, (L-R)5, L-16P ← Row 48

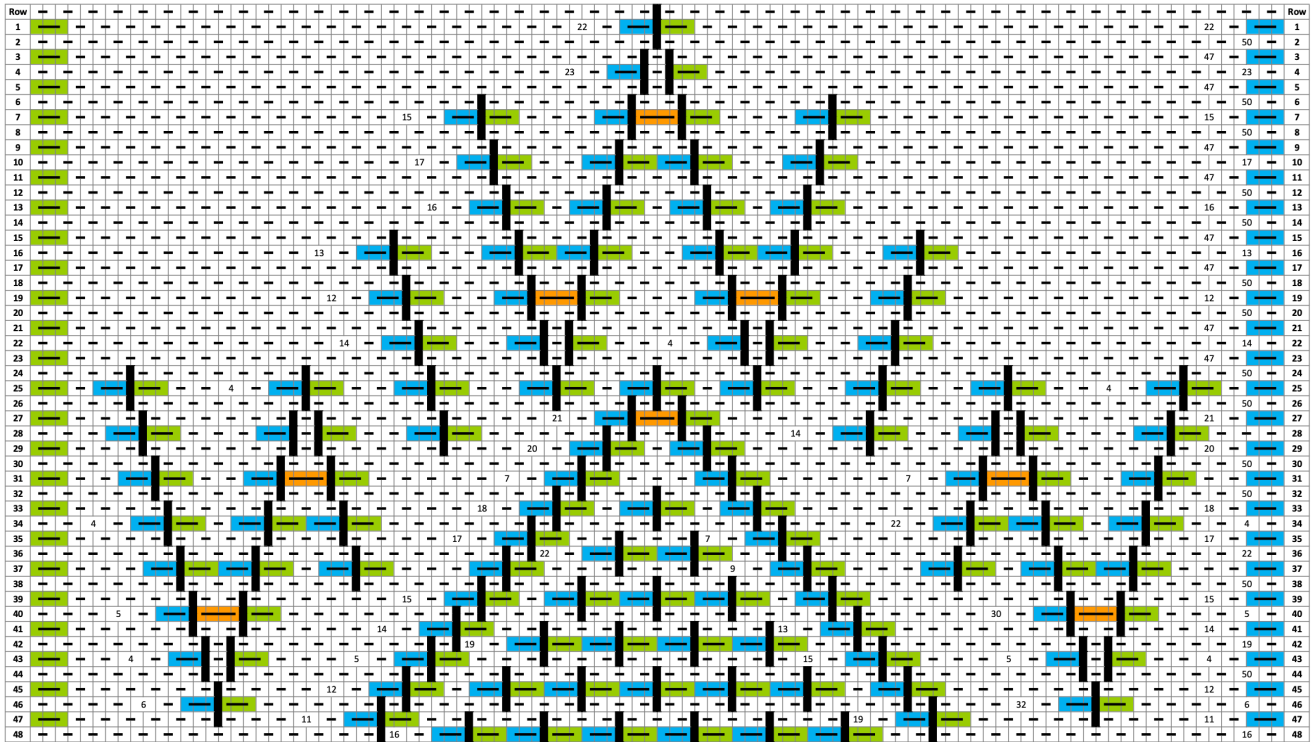



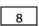



Chart legend

	Plain Interlinking Stitch		Double stitch: two up, two down Pick up two, put two down
	Left-Edge Stitch Pick up one, put two down		Indicates the number of stitches
	Right-Edge Stitch Pick up two, put one down		Indicates a hole