

August MOTIF B



This motif features pattern stitches on the overplait row.

For a warp of 40 threads (20 loops)

- L-3P-R, L-3P-R, L-5P-R ← Row 1
- 20P ← Row 2
- L-17P-R ← Row 3
- 5P-R, L-2P-R, 1P, L-6P ← Row 4
- L-17P-R ← Row 5
- 20P ← Row 6
- L-4P-R, L-1P-R, 1D, L-4P-R ← Row 7
- 20P ← Row 8
- L-17P-R ← Row 9
- 6P-R, L-R, L-R, L-5P ← Row 10
- L-17P-R ← Row 11
- 20P ← Row 12
- L-5P-R, 1D, L-1P-R, L-3P-R ← Row 13
- 20P ← Row 14
- L-17P-R ← Row 15
- 7P-R, 1P, L-2P-R, L-4P ← Row 16
- L-17P-R ← Row 17
- 20P ← Row 18
- L-6P-R, L-3P-R, L-2P-R ← Row 19
- 20P ← Row 20

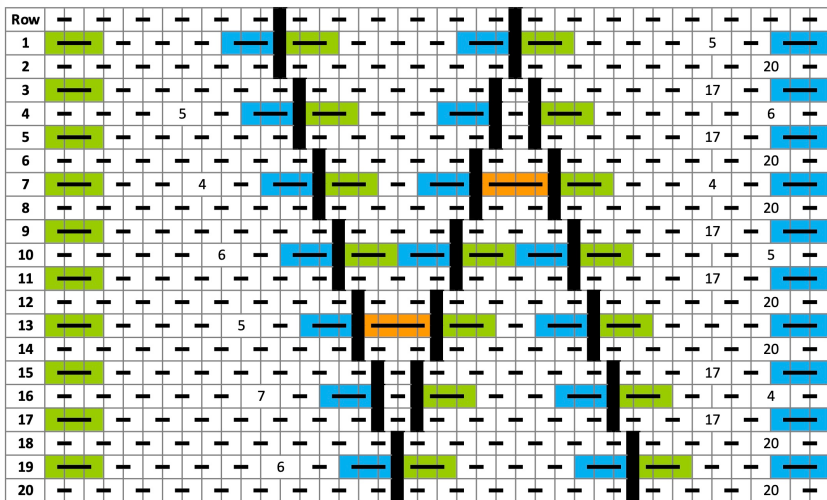


Chart legend



Plain Interlinking Stitch



Double stitch: two up, two down
Pick up two, put two down



Left-Edge Stitch
Pick up one, put two down



Indicates the number of stitches



Right-Edge Stitch
Pick up two, put one down



Indicates a hole